

48 - NAIDU PANDURANGAN + R. SAUNDER

R. Saunder Architects Ltd

Non-comforming

GOLD COAST CULTURAL PRECINCT:

Project Proposal

Project Brief Notes + Significant

Brief Note On Presentation:

Our GCCP-problem Difficulties:

GCCP_Sent Proposal herein and the presentation quality suffers from our computer crash and hard disk failure that contained GCCP-Submission sheets. The one we are sending is a submission carried out -in the last two days- by manually drawn ones unfortunately and also in immense hurry as well.: we are very sorry for the unexpected mishap indeed. I hope and wish it would not cause any inconvenience herein, please.

Presentation: The presentation that we are presenting here is a very critical thinking towards addressing the polyphonic problem circumstances of GCCP as well as our inescapable deeper problems of contemporaneous man's world as well. Towards this our approach departs consciously from current practices' uni-lingual method narrowed focus towards problem solving. We do think that simply it cannot truly capture -essentially- the multi-valent natures of project elementals and its expressives and esp. the complex of realm of man and his present and future world scapes; thus inquiry in architecture, planning and urban design necessarily have emerged as complex-composites whose design -decisions taken in project proposal will affect not only client-centric goals but importantly will be a potent cause resulting in impoverished project surfaces and its contextual's geo spatials for time to come. Thus we are embracing as well as utilize Conjoint methodology, project elemental interaction modeling and unique GCCP + GC circumstances indeed. In so doing, we are able to address the variegated colors and issues, to wit, the environmental management and the iridescent and the elusives of architectural form-interpretation and thus creating it in a robust way employing the current positive theory literature and plural practice realms indeed.

Project Significant: Because of GCCP complex design circumstances arrived herein - and in the context of Stage-1 GCCP inquiry, we think, It would be useful to note them as significant points that we are able to achieve in our proposal. They are as follows: Future Looking and Future Shaping: The proposal envisioned here addresses the problem of void in urban structuring of GC and cognitive spatial map and way-finding issues by creating GCCP as an armature around which GC's destiny is circumscribed: it is the center point and the circumference relationship issues. Some excellent examples of this natures embellished are in the city of Philadelphia by William Penn and Charles L' Enfant's Washington D,C's and others. In GC/GCCP case, we thought GCCP-Competition is an excellent opportunity to address them indeed.

.Environmental Management: The proposal - in order to combat - often recalcitrant anthropogenical issues emerging from pattern movement in cities, namely, auto orientedness, we are proposing a fully healthy and walkable environment in GCCP spaces and -possibly- extendable to west of Bundall community as well. This is achieved by two-prong approach, that is, developing a new pattern of movement in GCCP by ambitiously designing 2500 +/- automated car parking facility in the subterranean spaces of GCCP complemented and synchronized in tandem by the use of intelligent Alternative transportation modules such as, Dial-A-Ride and the like ones.

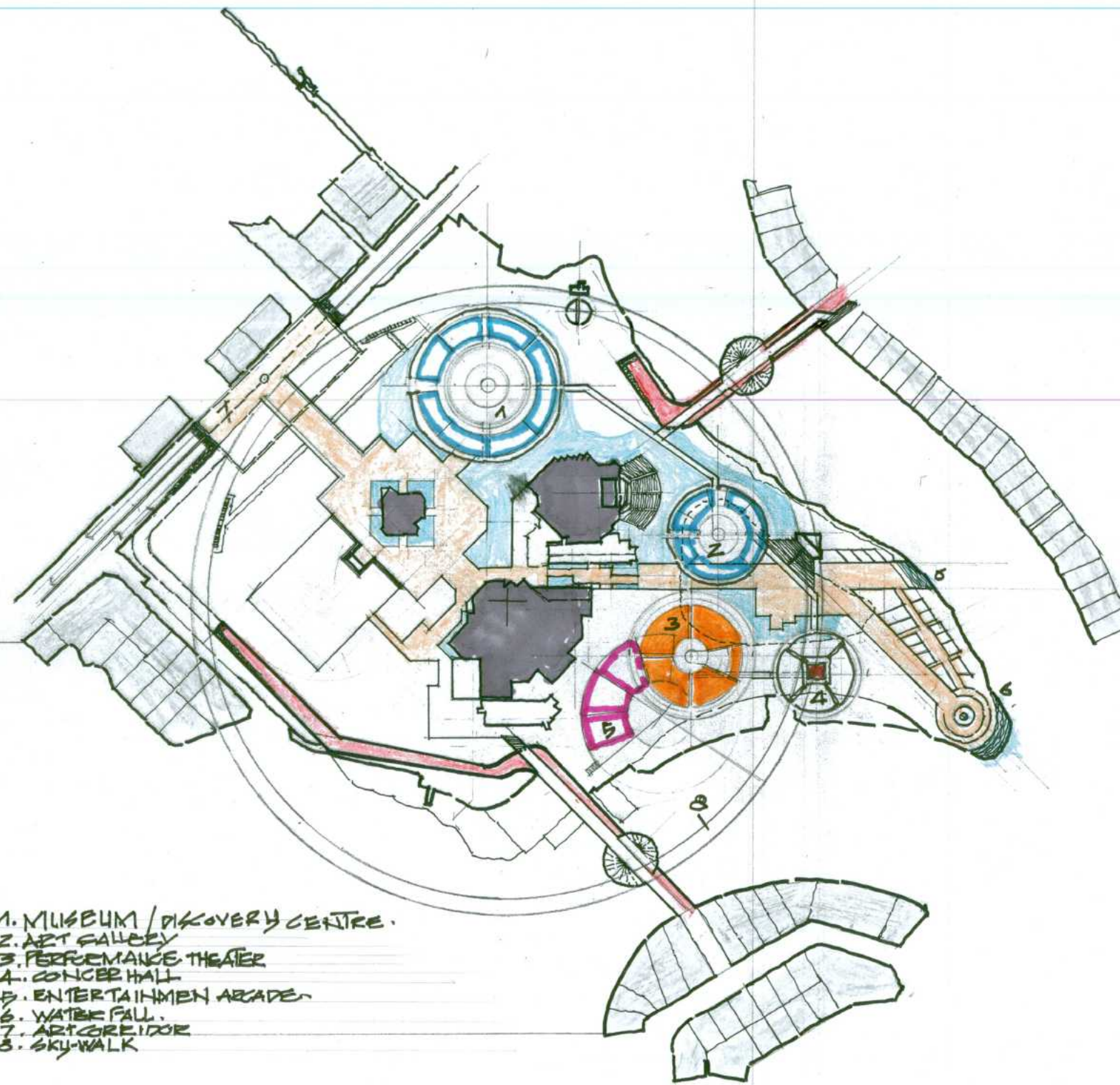
GCCP as Island_the_Flower + Island as Acropolis of GC: The flower here, we are thinking of Monet's Giverny indeed. Why so? A. Flower is a pinnacle of the heroic plants' achievement and also it is a fused state of the dual life of a being, that is, instruemental and transcendental life of one's thirst, search for attempting to marry as well as internalize in its life spaces of living: It is really a symbiotic poetry realized in real world measures. Transmuting such a spirit into GCCP - the point center of GC - is indeed needed herein -both creating an exemplar in GC realms as well as our design proposal conception, that is, an Acropolis of Gold Coast indeed. Nextly, Australia really stands in the forefront of research in ecological spheres, thus we wanted to crystallize and concretize in GCCP spaces and elementals wholly.GCCP overlooks the emerging very dynamic city scape and the sea, thus, developing view corridors and view-planes are essential intangibles the project ought take note of. This we embrace through design of establishing central view corridor - linking the project elemetals as design path-celebratory and developing +15-feet system pedestrain moment in the project spaces. Nextly, we have created a circular-Sky-Walk encircling the GCCP as a whole. Further, we combine the need to be conscious of the Flood-Plain problem present in GCCP since it is a gift of Nerang-River that is intertwined with intrinsic vulnerabilities, flooding and immense beauty as a timeless river as well. Towards this the design proposal designed minimum 15-feet above the ground level as well (see here Island-the-Flower).

In sum, in stage-1 we have attempted to search and capture the elusives as well as the hard metrics of GCCP as a fused wholes as a foundational design search and inquiry in the GCCP Composites. Indeed. They ought to further to be looked at - and will be looked after in the 2nd and 3rd-phases design concretization indeed.

Sheet - 3
Gold Coast Cultural Precinct Design Competition
gccp - narrative response + issue appreciation
and achieved in gccp
Gold Coast, Queensland. Australia

n a i d u p a n d u r a n g a n
B.Arch (M.Arch/M.C.P Uni. of Pennsylvania)
+
r a j s a u n d e r
B.Arch M.R.A.I.C
R.Saunder Architects Ltd. Edmonton Canada.

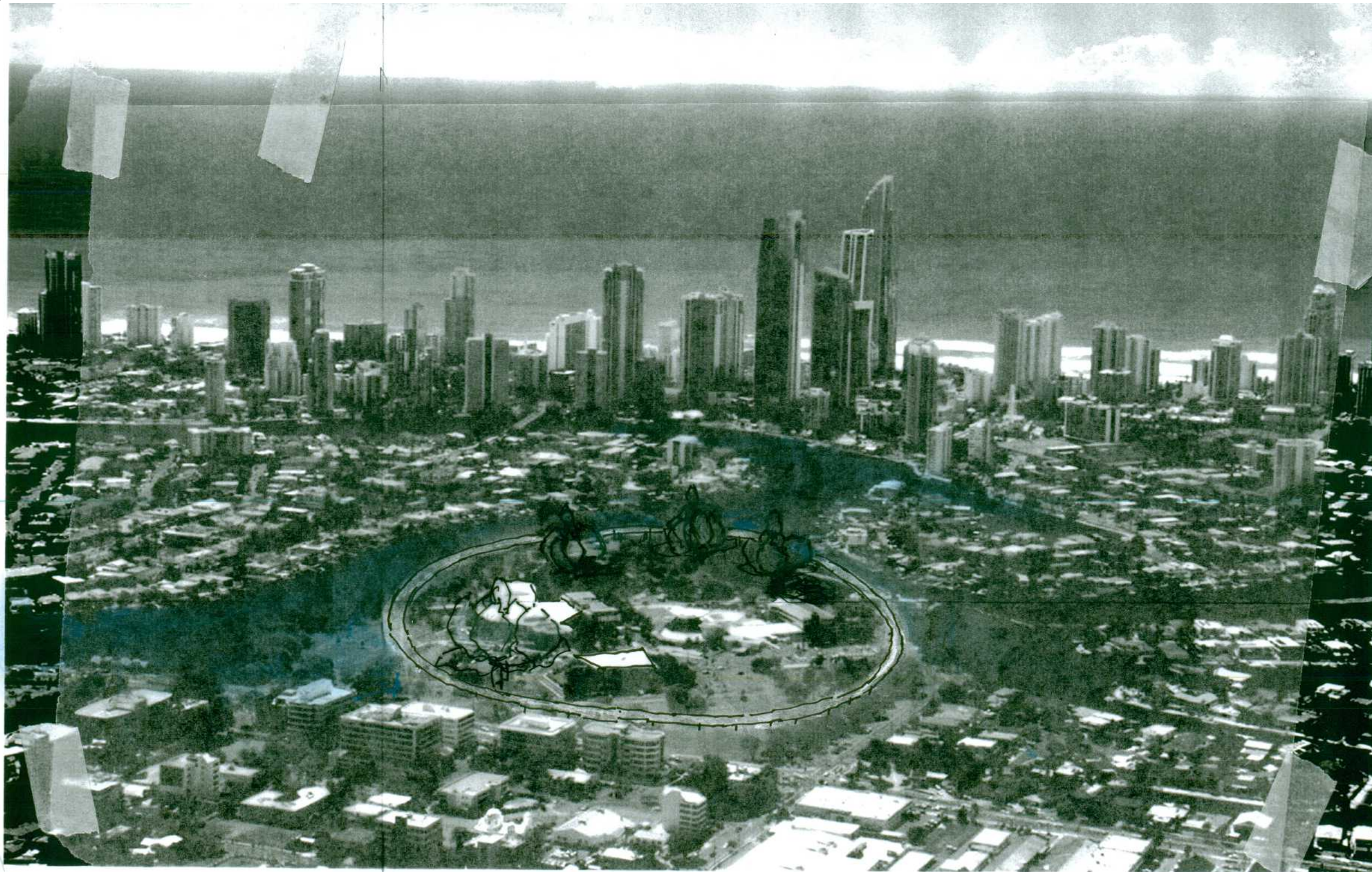
sheet - 3 of 6



- 1. MUSEUM / DISCOVERY CENTRE.
- 2. ART GALLERY
- 3. PERFORMANCE THEATER
- 4. CONCERT HALL
- 5. ENTERTAINMENT ARCADE
- 6. WATER FALL.
- 7. ART CORRIDOR
- 8. SKY-WALK

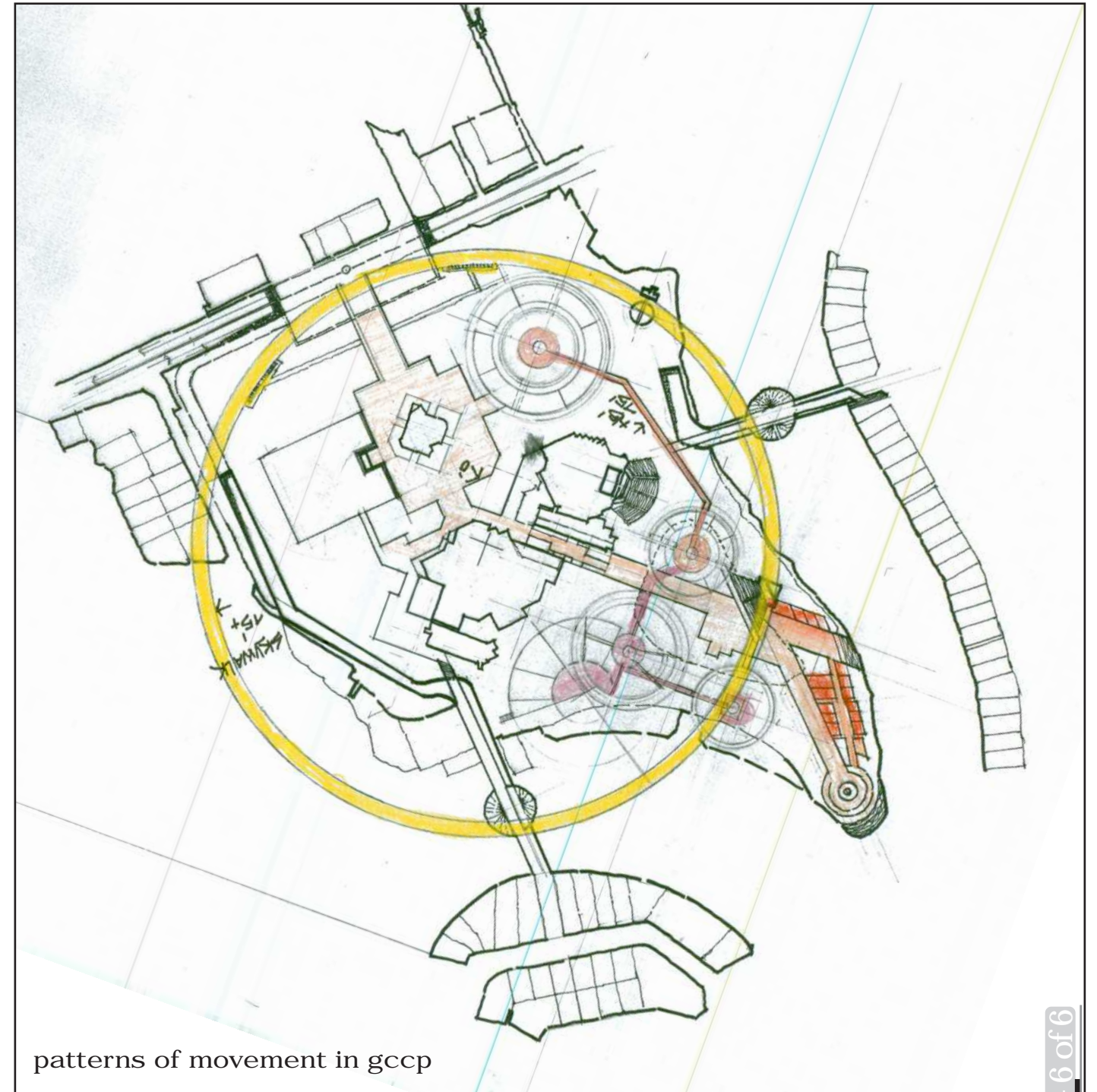
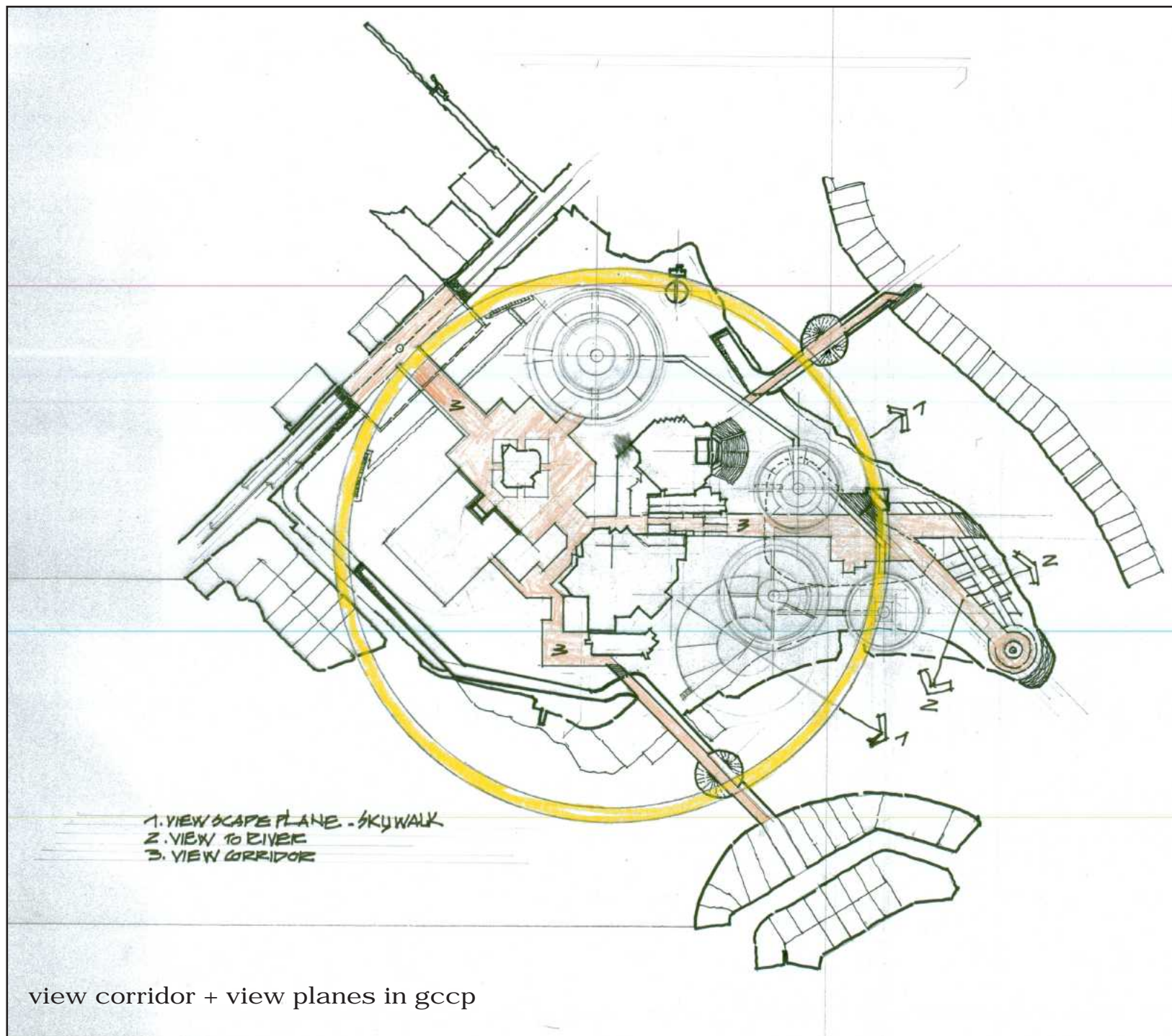
Sheet - 4
 Gold Coast Cultural Precinct Design Competition
 gccp - facility+ facility organization
 Gold Coast, Queensland. Australia

naidu pandurangan
 B.Arch (M.Arch/M.C.P Uni. of Pennsylvania)
 +
 raj saunder
 B.Arch M.R.A.I.C
 R.Saunder Architects Ltd. Edmonton Canada



Sheet - 5
Gold Coast Cultural Precinct Design Competition
gccp - gccp proposal + city of gold coast
Gold Coast, Queensland. Australia

naidu pandurangan
B.Arch (M.Arch/M.C.P Uni. of Pennsylvania)
+
raj saunder
B.Arch M.R.A.I.C
R.Saunder Architects Ltd. Edmonton Canada



sheet - 6 of 6

Sheet - 6
 Gold Coast Cultural Precinct Design Competition

gccp - view corridor + pattern of movement
 Gold Coast, Queensland, Australia

n a i d u p a n d u r a n g a n
 B.Arch (M.Arch/M.C.P Uni. of Pennsylvania)

+
 r a j s a u n d e r
 B.Arch M.R.A.I.C

R.Saunders Architects Ltd. Edmonton Canada